

2020 Oxford Farming Conference

**“How do we define a healthy Farm”**

Dr Alastair Leake *FRAgS FIAgrM Cenv*

Head of the Allerton Project



# How do we define a healthy farm?

- **Multi functional land use producing multiple outcomes?**
- Soil & Water
- Wildlife & Biodiversity
- Carbon & Climate
- Social & Community
- Food & Nutrition
- Profitability & Sustainability



## Norfolk four-course system

Method of agricultural organization established in Norfolk county, England, and in several countries before the end of 17<sup>th</sup> century; it was characterized by an emphasis on fodder crops by absence of a fallow year.

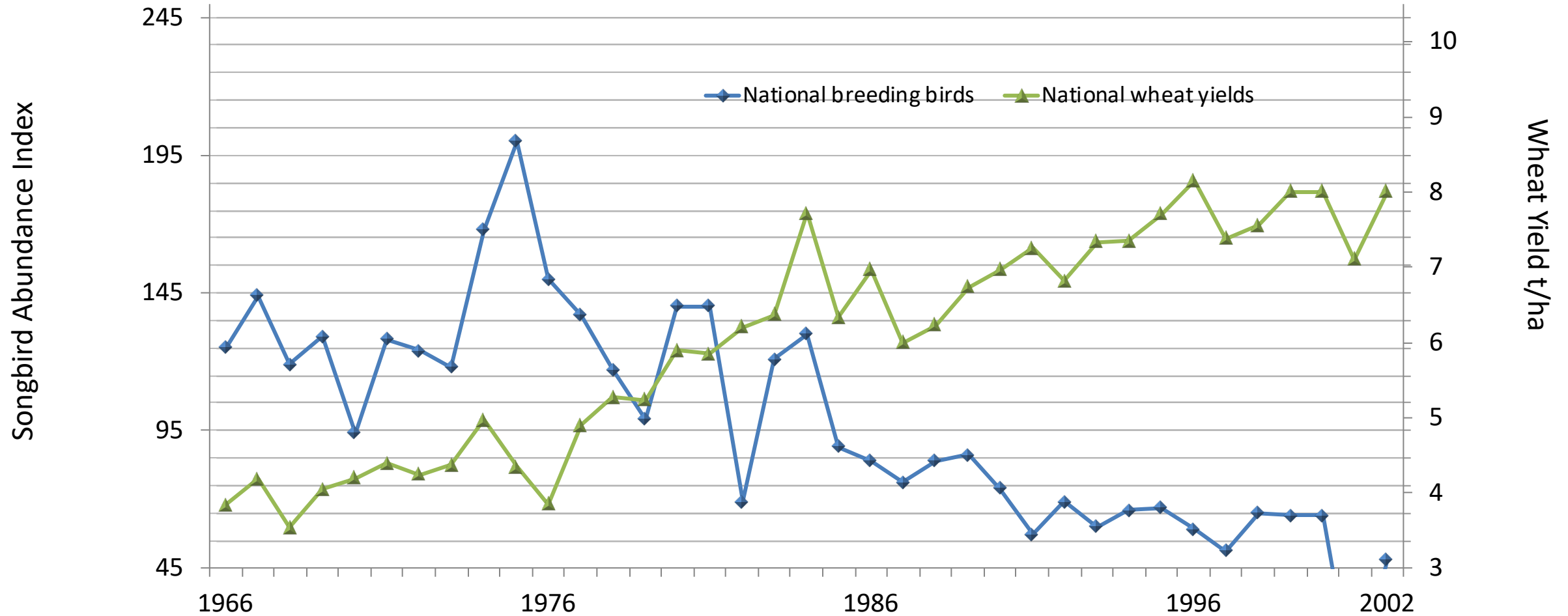


# How do we define a healthy farm?

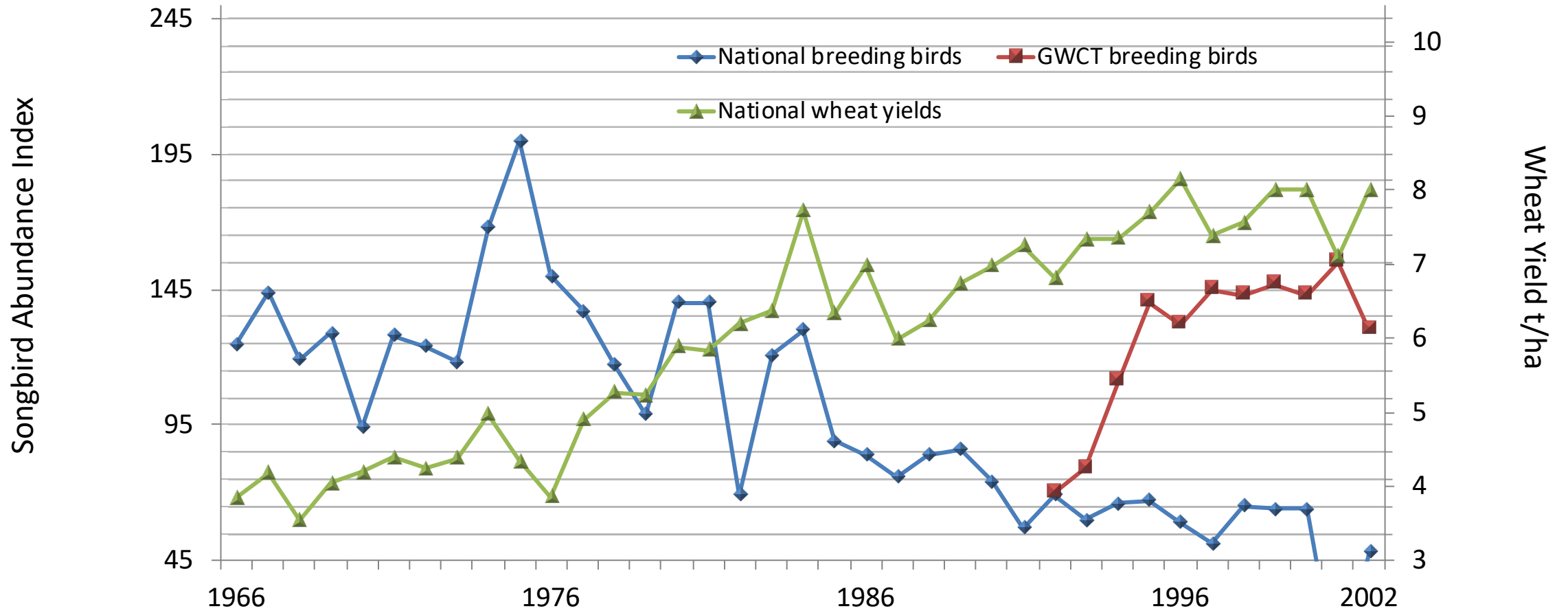
## Wildlife & Biodiversity



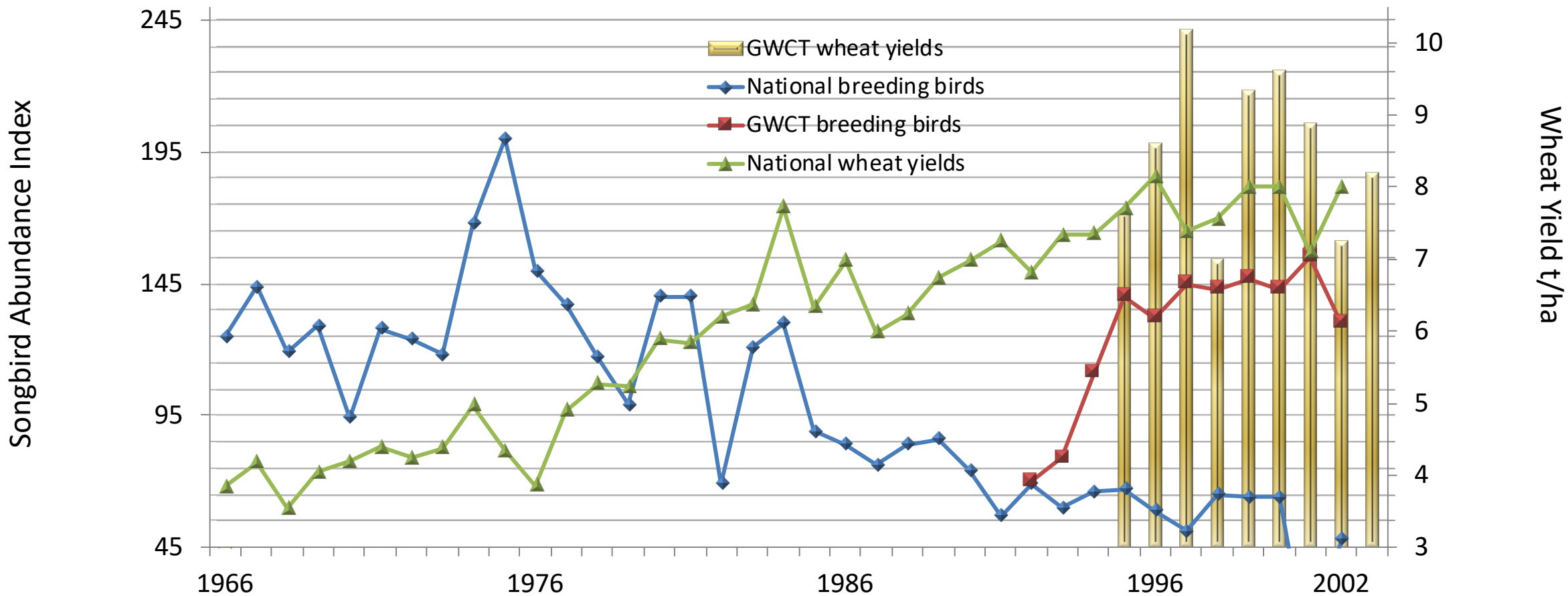
# UK Wheat Production Vs Songbird Abundance



## UK Wheat Production Vs Songbird Abundance

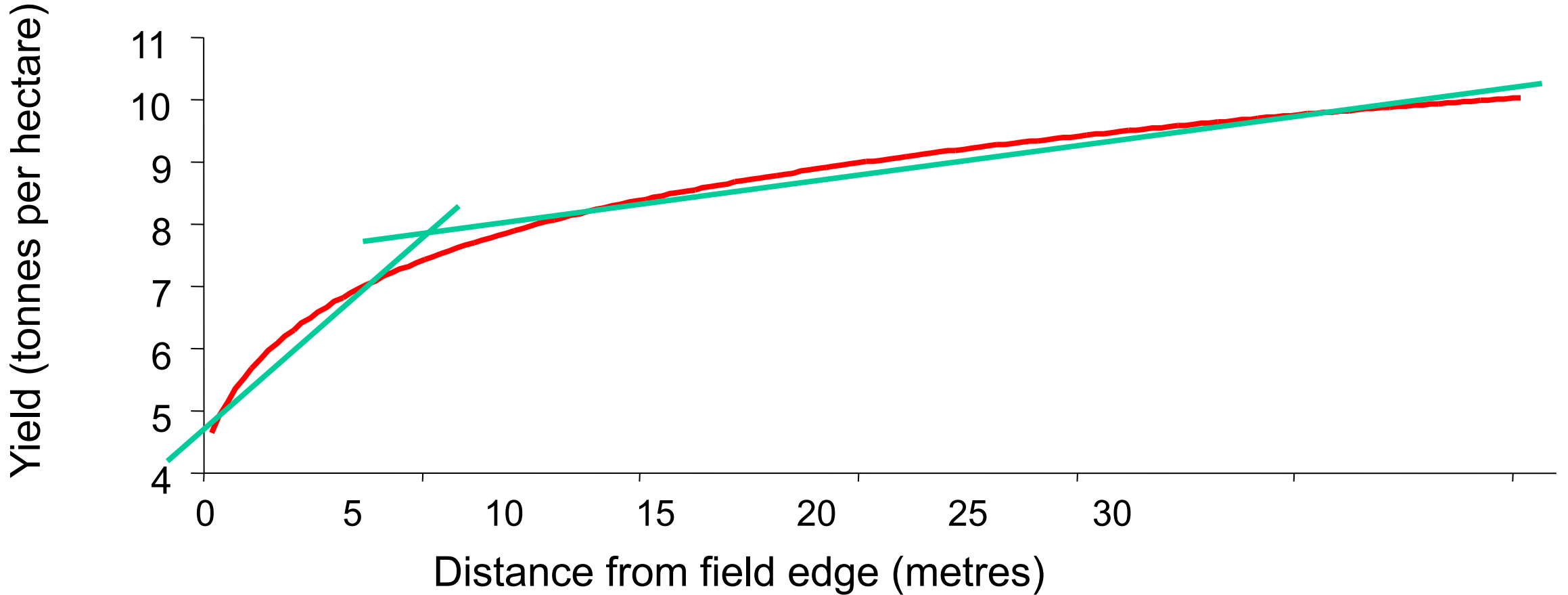


## UK Wheat Production Vs Songbird Abundance



# Field margins

Crop yield in field margins

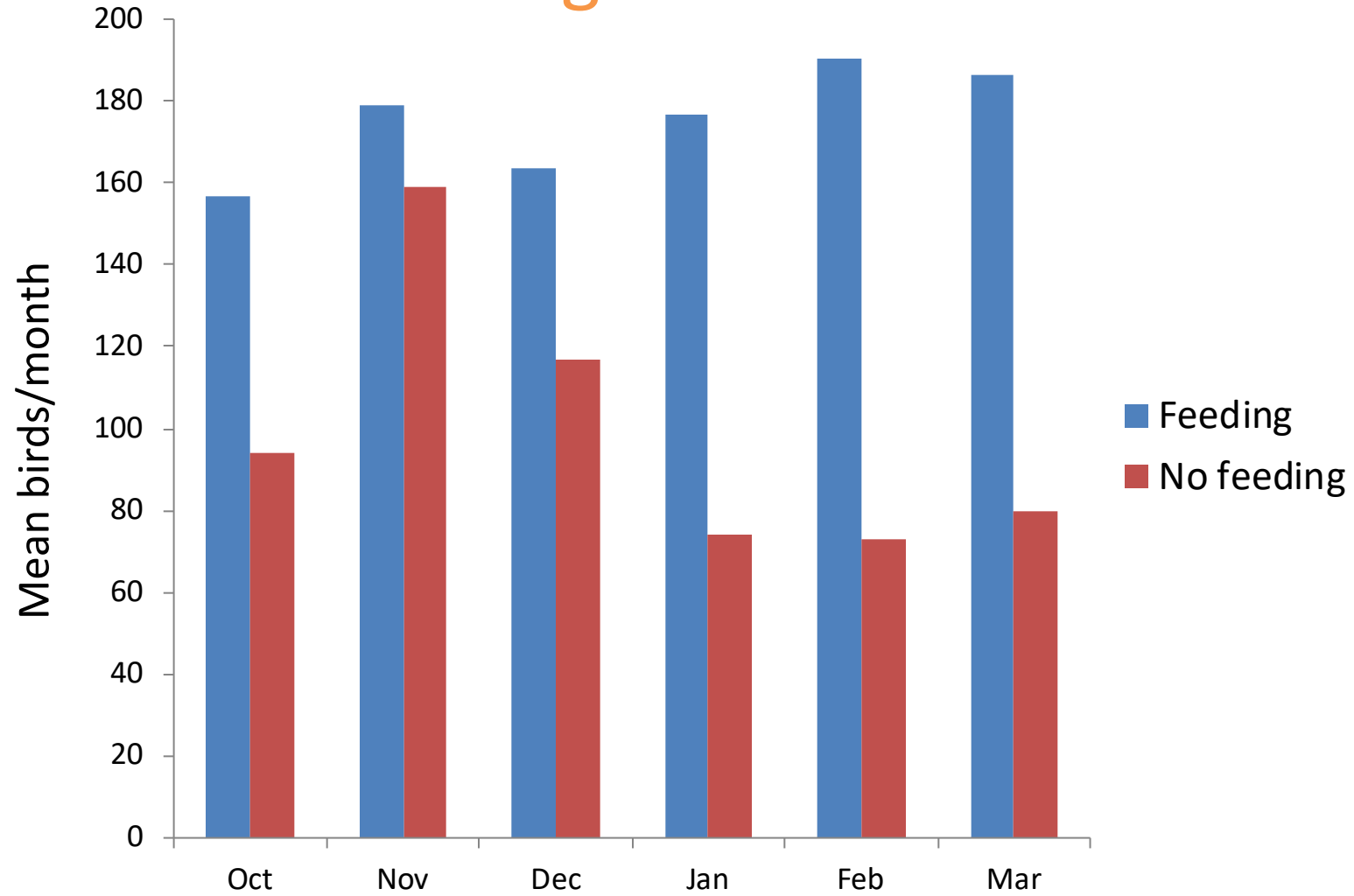




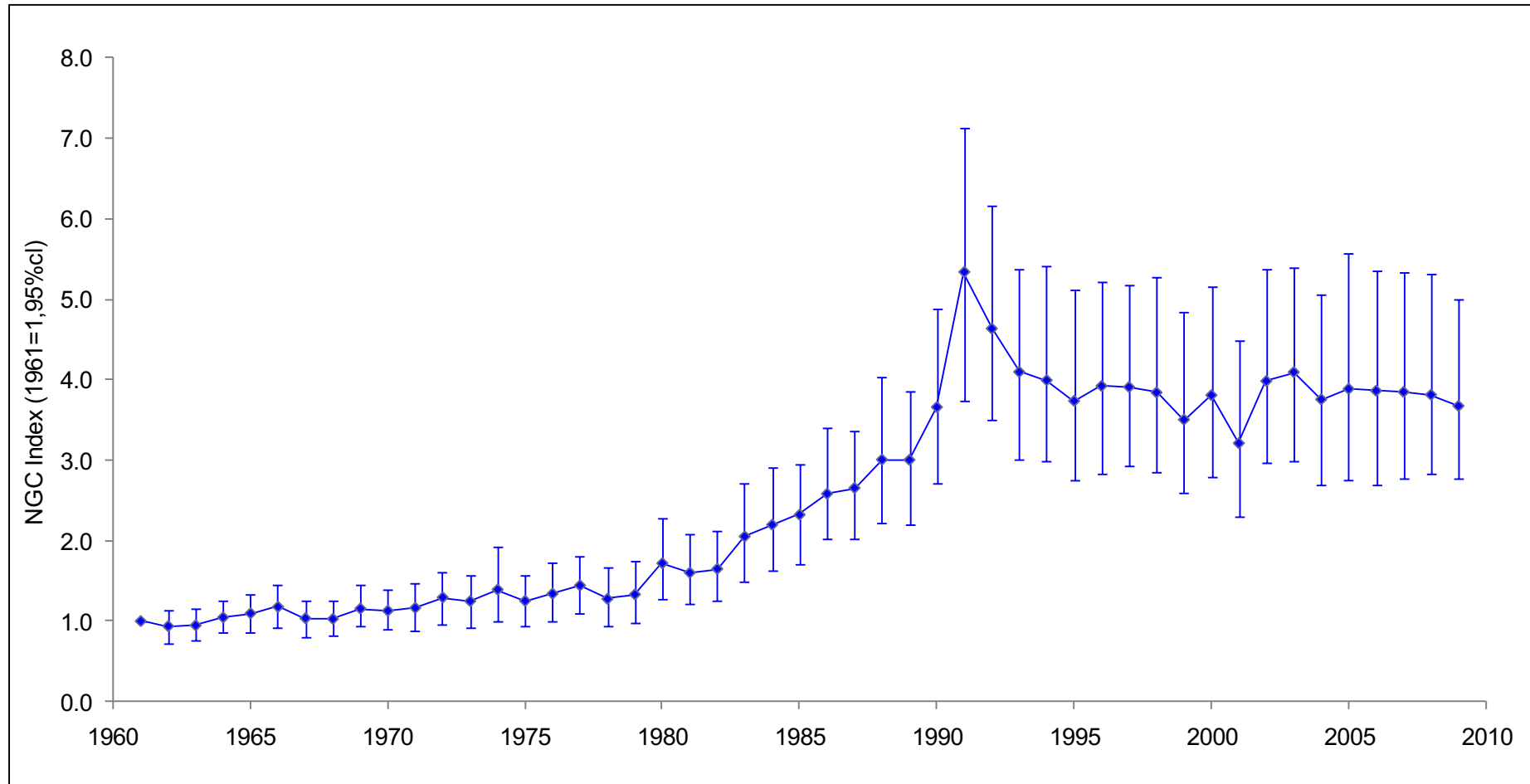


Game & Wildlife CONSERVATION TRUST

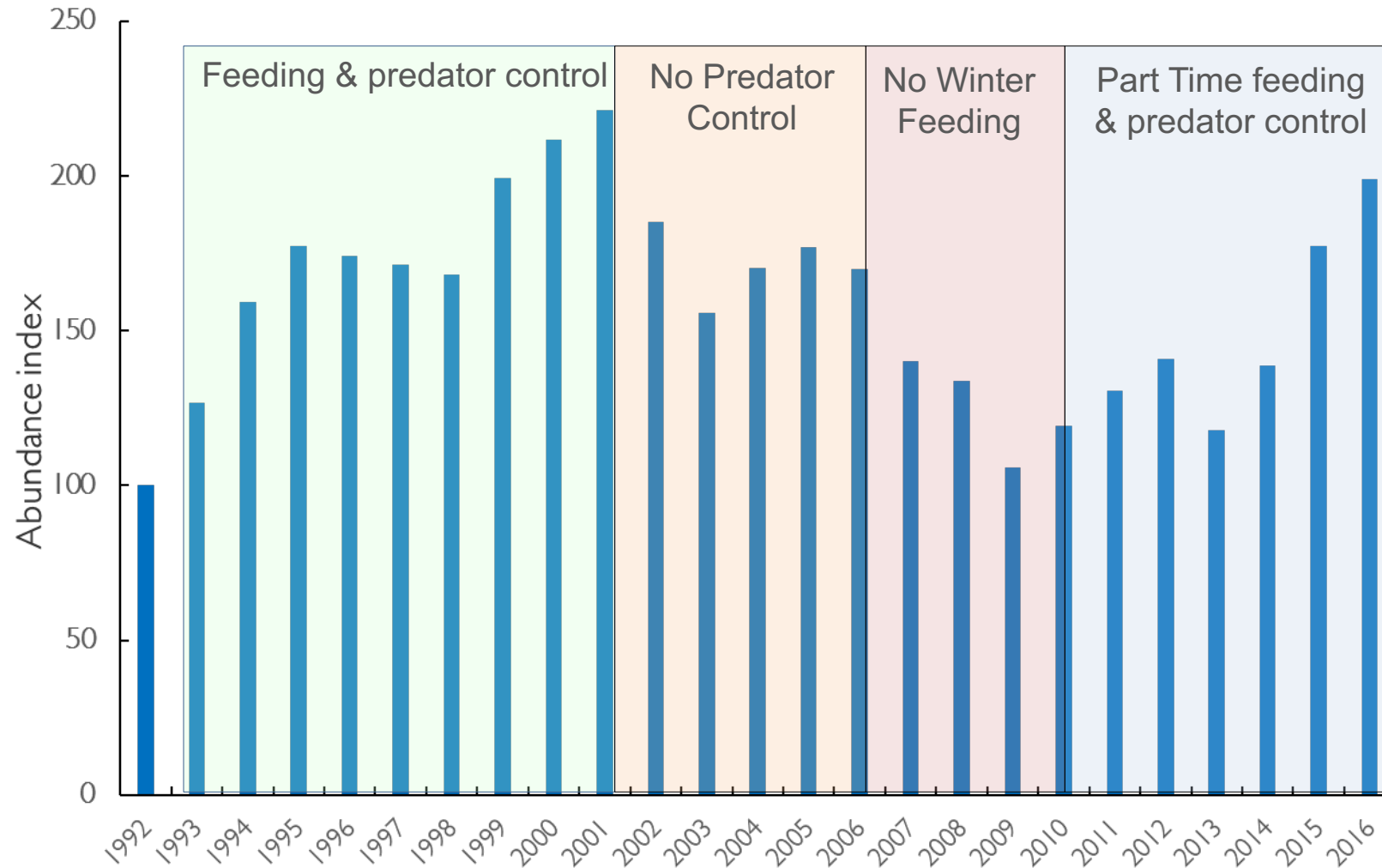
# Winter feeding



## BTO - Magpie Population 1961-2009



# Annual Songbird Abundance 1992-2016



# How do we define a healthy farm?

## Carbon & Climate







Game & Wildlife CONSERVATION TRUST









